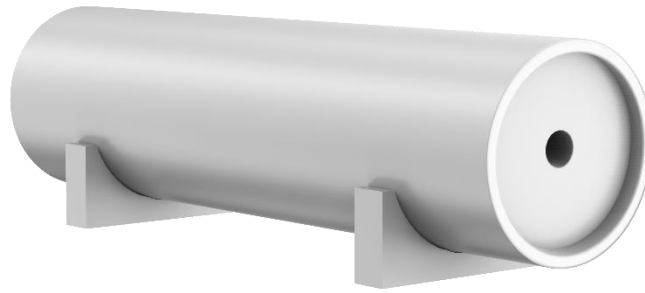


TM2400 Solenoid



* This figure is for reference only. There may be some differences according to the technical specifications

1. Summary

The TM2400 is a series of solenoids, which can be used as a magnetic field generator to match with a precision excitation current source to generate a DC standard magnetic field.

2. Applications

- Open-circuit magnetic sample detection
- Calibration of a magnetic sensor
- Traceability calibration of the magnetometer
- Electromagnetic interference simulation experiment
- Magnetic field influence test

3. Specifications

Specifications	Diameter (mm)	Inner Hole Diameter (mm)	Maximum Magnetization Field (G)	Homogeneous Area @uniformity	Max. Current (A)	Power (kW)
TM2400-1000mm-1250G	1000	100	1250 G		± 25	1.8
TM2400-1000mm-1000G	1000	100	1000 G	Φ500 mm@5%	± 25	1.5
TM2400-1000mm-750G	1000	100	750 G	Φ240 mm@1%	± 25	1.2
TM2400-1000mm-500G	1000	100	500 G	Φ160 mm@0.5%	± 25	0.6
TM2400-1000mm-200G	1000	100	200 G	Φ80 mm@0.1%	± 25	0.6
TM2400-1000mm-100G	1000	100	100 G		± 25	0.3
TM2400-600mm-1250G	600	60	1250 G		± 25	1.8
TM2400-600mm-1000G	600	60	1000 G	Φ300 mm@5%	± 25	1.5
TM2400-600mm-750G	600	60	750 G	Φ140 mm@1%	± 25	1.2
TM2400-600mm-500G	600	60	500 G	Φ90 mm@0.5%	± 25	0.6
TM2400-600mm-200G	600	60	200 G	Φ45 mm@0.1%	± 25	0.3
TM2400-600mm-100G	600	60	100 G		± 5	0.15
TM2400-300mm-750G	300	30	750 G	Φ150 mm@5%	± 25	0.3
TM2400-300mm-500G	300	30	500 G	Φ70 mm@1%	± 5	0.15
TM2400-300mm-200G	300	30	200 G	Φ45 mm@0.5%	± 5	0.15
TM2400-300mm-100G	300	30	100 G	Φ20 mm@0.1%	± 5	0.15

4. Ordering Information

